

# Light World Dungeon (Remix)

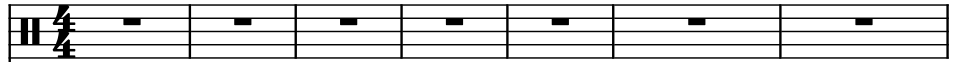
Composer: Koji Kondo

Game: Legend Of Zelda, The: A Link To The Past

[pianogame.org](http://pianogame.org)

♩ = 180

4-Piece Drum Kit, Percussion



Large Drum Kit, 10-2

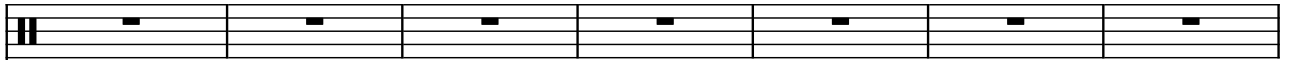


Large Drum Kit, X-2 looks awful.

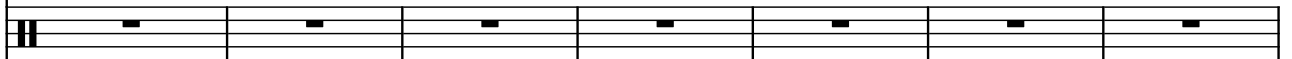


8

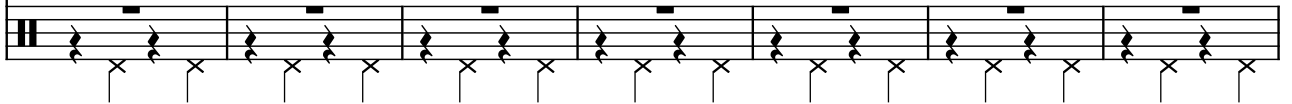
D. Kit



D. Kit

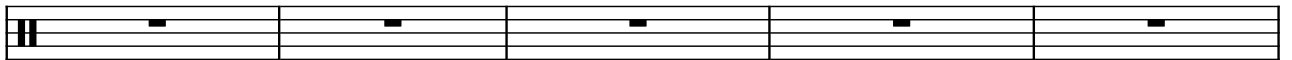


D. Kit



15

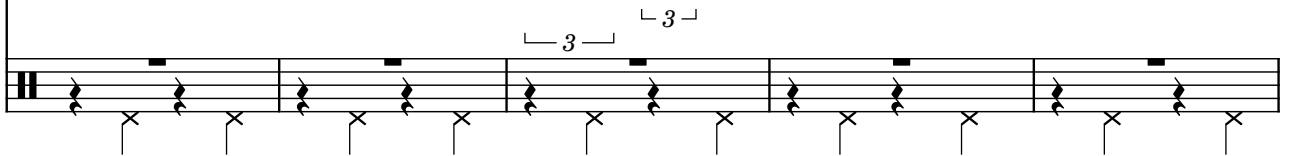
D. Kit



D. Kit

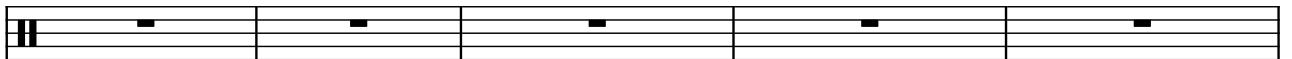


D. Kit



20

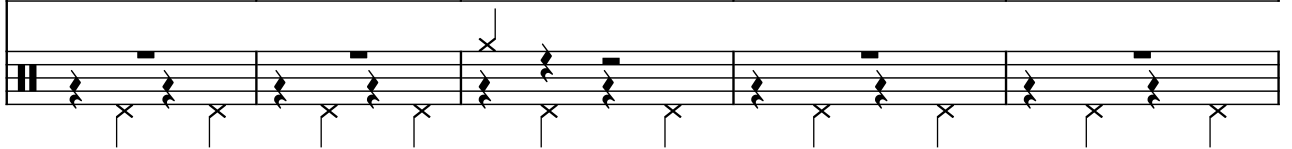
D. Kit



D. Kit

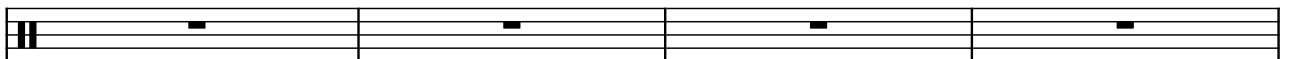


D. Kit



25

D. Kit



D. Kit



D. Kit



29

Measures 29-32 of a musical score for three staves, each labeled "D. Kit". The top staff features a single eighth note with an asterisk in measure 29, followed by rests. The middle staff contains a continuous eighth-note pattern. The bottom staff shows a complex rhythmic pattern with eighth notes and rests, including a measure with a cross symbol above the staff.

33

Measures 33-36 of a musical score for three staves, each labeled "D. Kit". The top staff has rests. The middle staff has a continuous eighth-note pattern. The bottom staff has a complex rhythmic pattern with eighth notes and rests, including a measure with a cross symbol above the staff.

37

Measures 37-40 of a musical score for three staves, each labeled "D. Kit". The top staff features a single eighth note with an asterisk in measure 37, followed by rests. The middle staff contains a continuous eighth-note pattern. The bottom staff shows a complex rhythmic pattern with eighth notes and rests, including a measure with a cross symbol above the staff.

41

Measures 41-44 of a musical score for three staves, each labeled "D. Kit". The top staff has rests. The middle staff has a continuous eighth-note pattern. The bottom staff has a complex rhythmic pattern with eighth notes and rests, including a measure with a cross symbol above the staff.

45

Measures 45-48 of a musical score for three staves, each labeled "D. Kit". The top staff features a single eighth note with an asterisk in measure 45, followed by rests. The middle staff contains a continuous eighth-note pattern. The bottom staff shows a complex rhythmic pattern with eighth notes and rests, including a measure with a cross symbol above the staff.

54

D. Kit

D. Kit

D. Kit

65

D. Kit

D. Kit

D. Kit

74

D. Kit

D. Kit

D. Kit

78

D. Kit

D. Kit

D. Kit

82

D. Kit

D. Kit

D. Kit

86

D. Kit

D. Kit

D. Kit

90

D. Kit

D. Kit

D. Kit

94

D. Kit

D. Kit

D. Kit

98

D. Kit

D. Kit

D. Kit

102

D. Kit

D. Kit

D. Kit

106

D. Kit

D. Kit

D. Kit

110

D. Kit

D. Kit

D. Kit

D. Kit

114

D. Kit

D. Kit

D. Kit

D. Kit

117

D. Kit

D. Kit

D. Kit

D. Kit

120

D. Kit

D. Kit

D. Kit

D. Kit

123

D. Kit

D. Kit

D. Kit

126

D. Kit

D. Kit

D. Kit

D. Kit

129

D. Kit

D. Kit

D. Kit

D. Kit

133

D. Kit

D. Kit

D. Kit

D. Kit

137

D. Kit

D. Kit

D. Kit

D. Kit

141

D. Kit

D. Kit

D. Kit

146

D. Kit

D. Kit

D. Kit

157

D. Kit

D. Kit

D. Kit

167

D. Kit

D. Kit

D. Kit