

Dr. Wily Stage 1 (14)

Composer: Takashi Tateishi

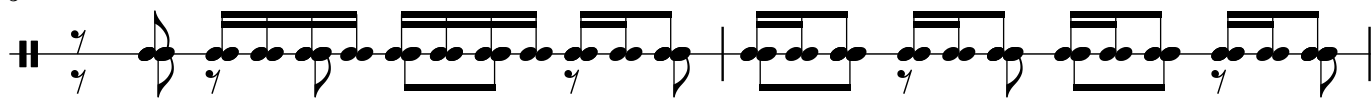
Game: Mega Man II

pianogame.org

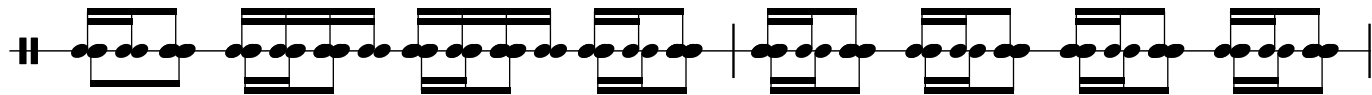
♩ = 120



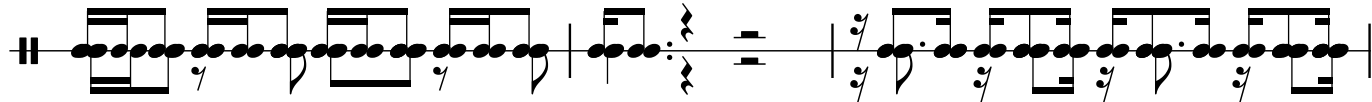
3



5



7



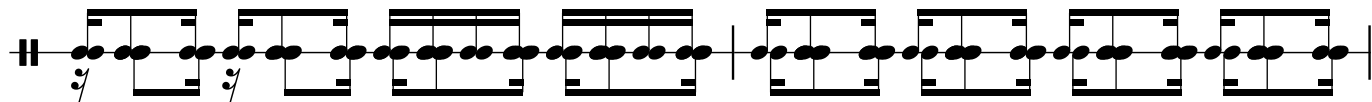
10



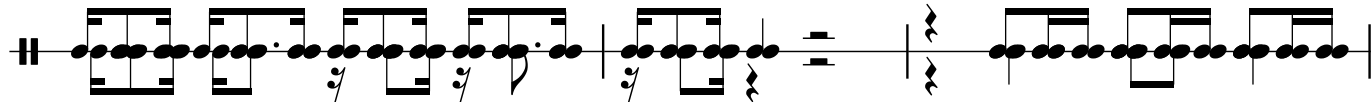
12



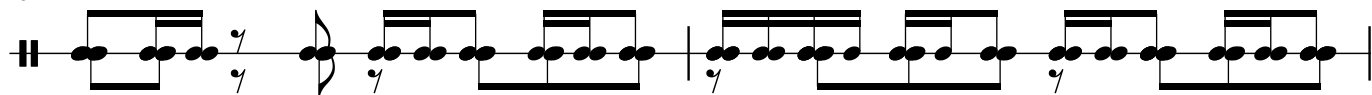
14



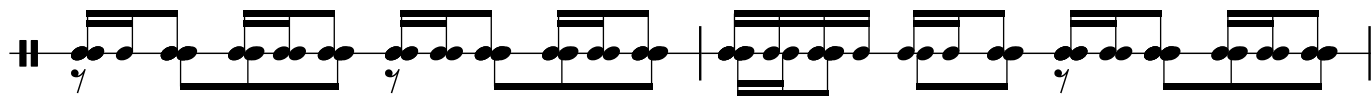
16



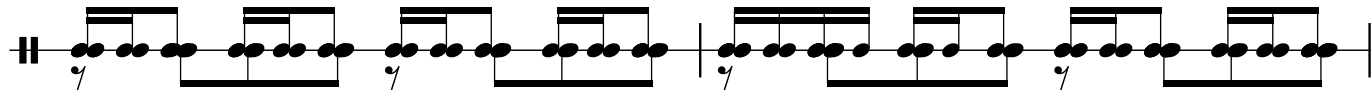
19



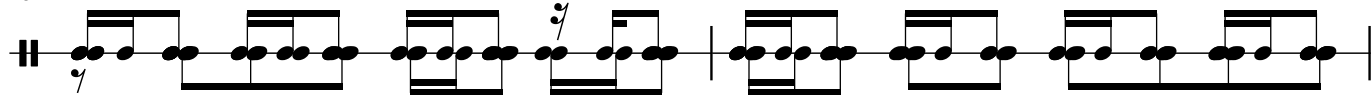
21



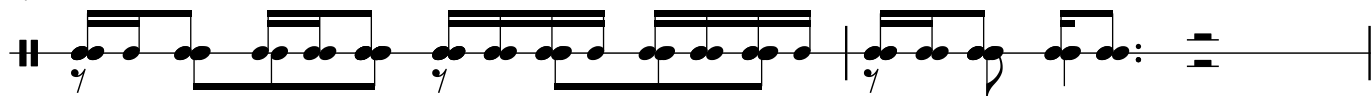
23



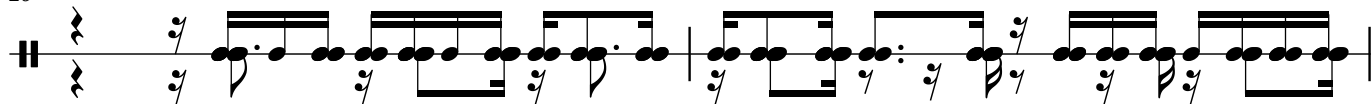
25



27

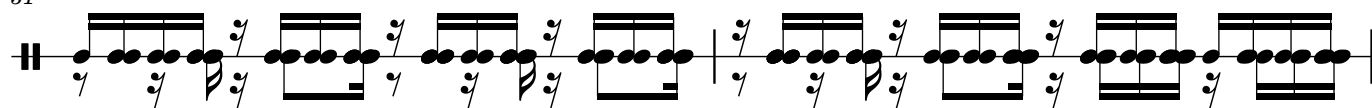


29

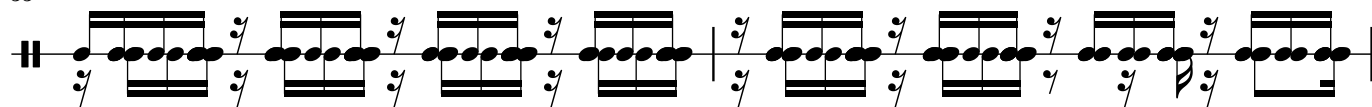


31

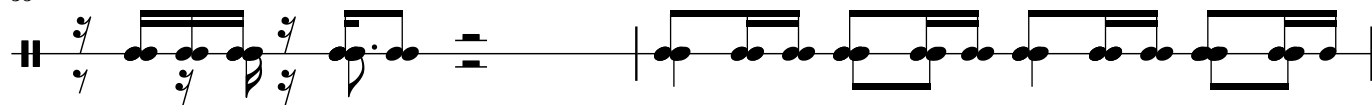
31



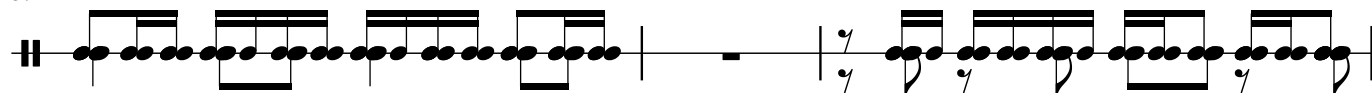
33



35



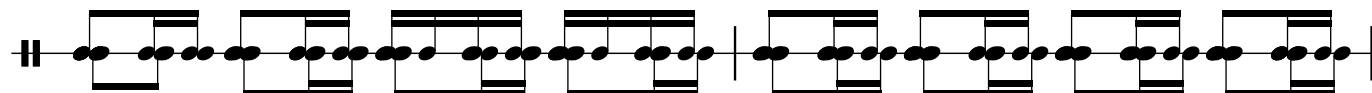
37



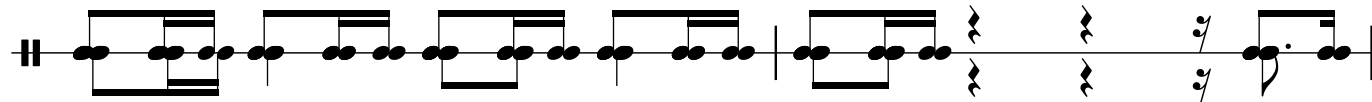
40



42



44



46



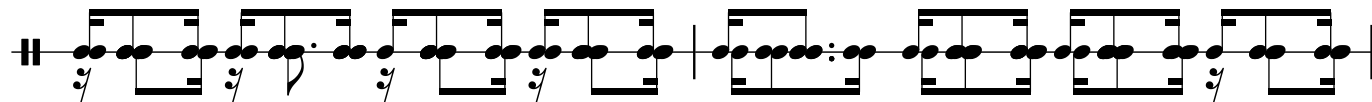
48



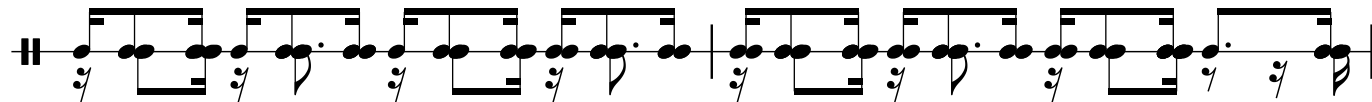
50



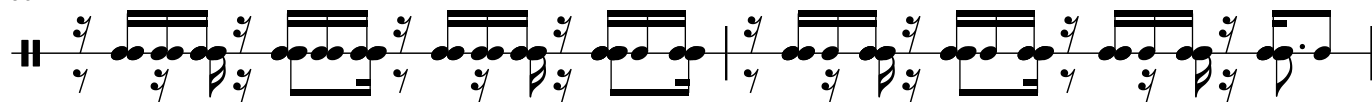
52



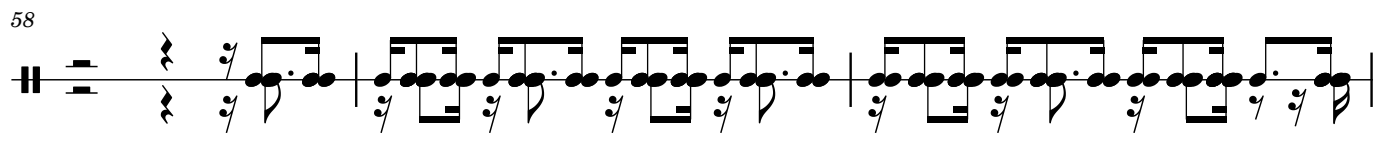
54



56



58

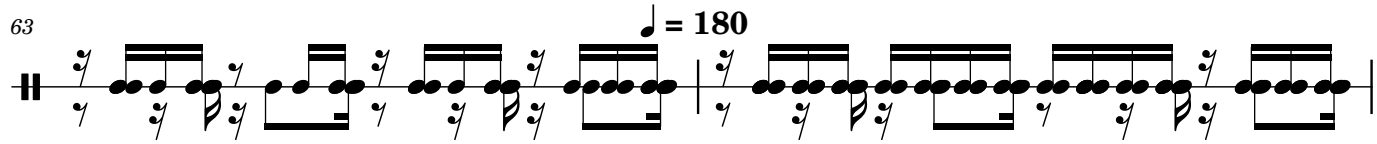


61




63

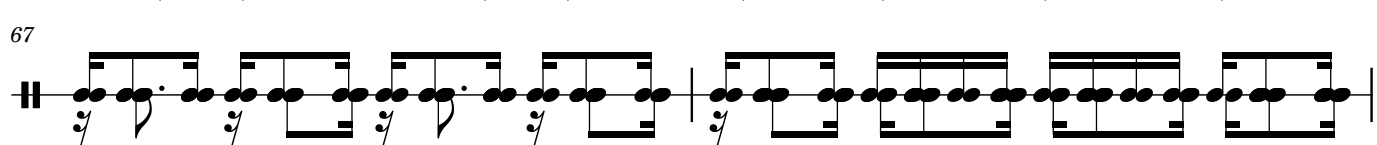
$\text{♩} = 180$



65




67




69



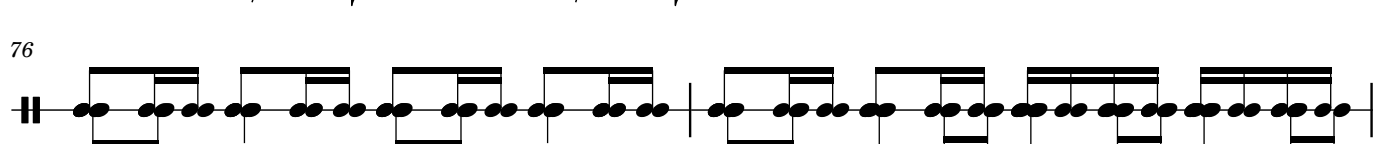
72



74




76




78




81



83



85



4

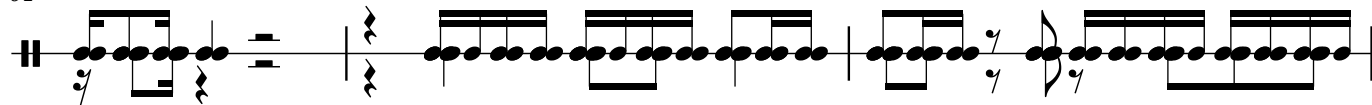
87



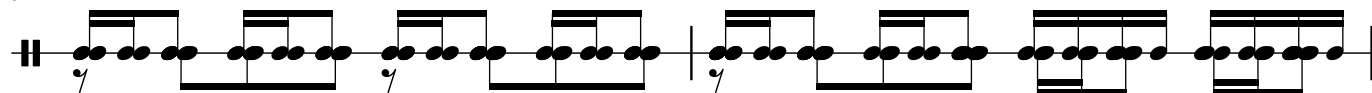
89



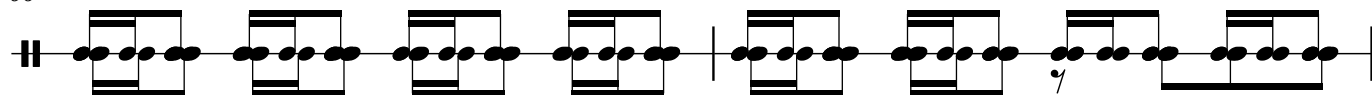
91



94



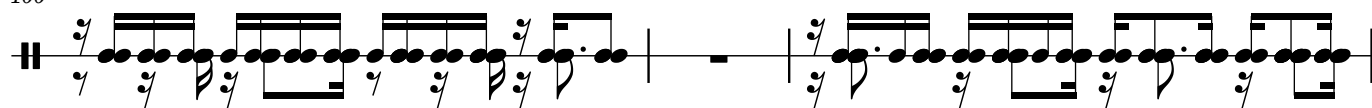
96



98



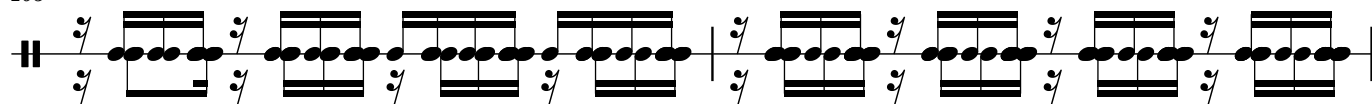
100



103



105



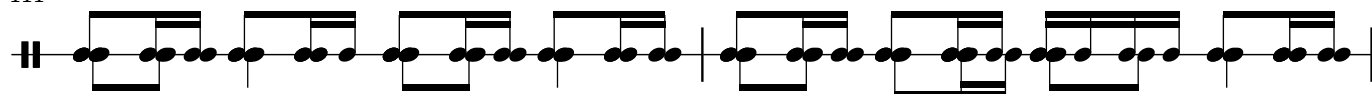
107



109



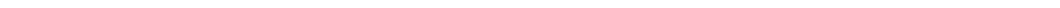
111



113

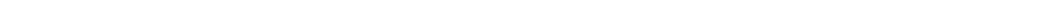


115

[illegible]

119

122




124

126


128

The musical notation for measure 128 is as follows: A treble clef is positioned at the start. The key signature has one flat (B-flat). The time signature is 4/4. The melody begins with a quarter rest, followed by an eighth note G4, an eighth note A4, a quarter note Bb4, and a quarter note A4. This is followed by an eighth note G4, an eighth note F4, a quarter note E4, and a quarter note D4. The next part of the measure consists of an eighth note C4, an eighth note Bb3, a quarter note A3, and a quarter note G3. The measure concludes with a repeat sign (two dots followed by a vertical line).

130

[illegible]

135



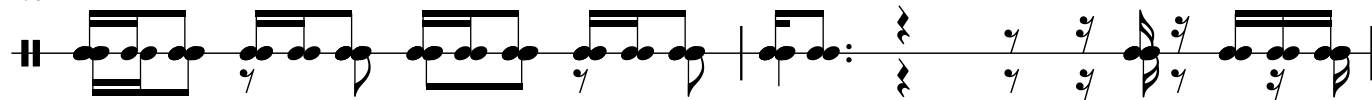
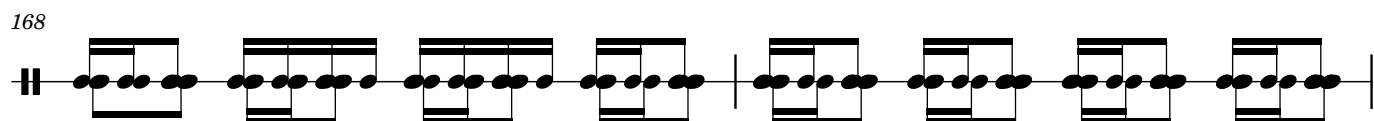
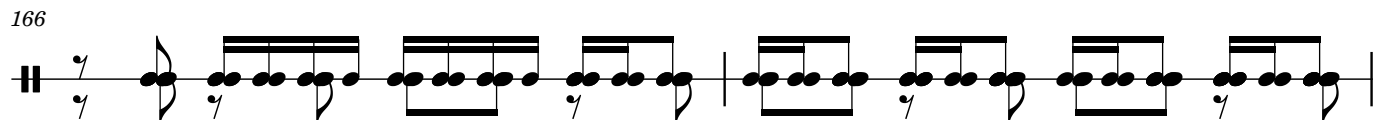
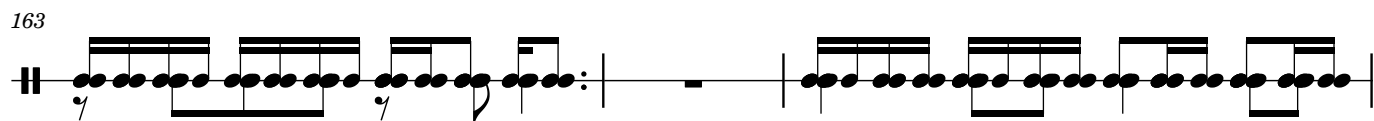
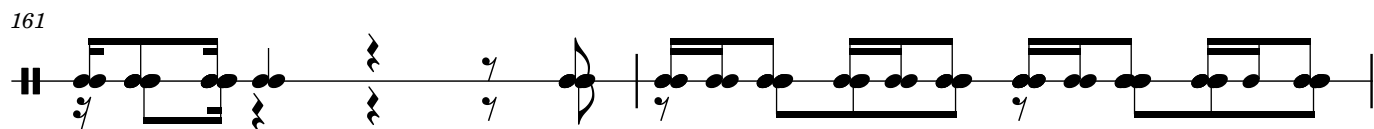
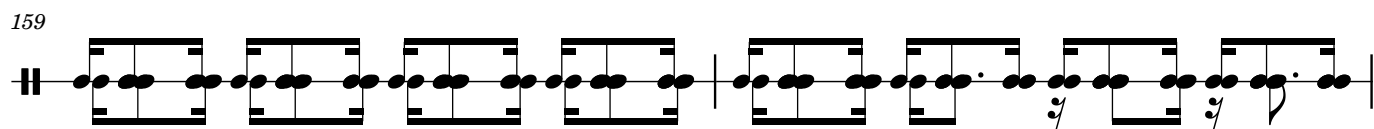
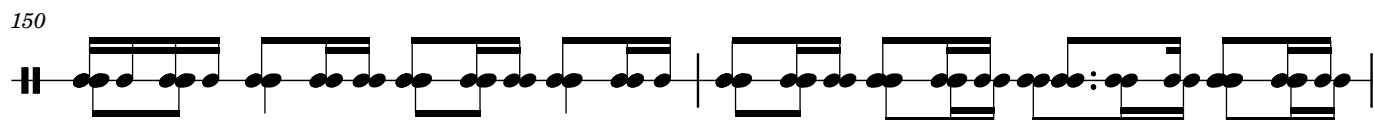
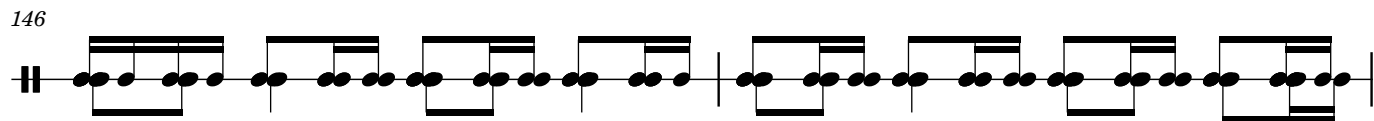
137

139

141

The musical score for Example 141 consists of a single staff. It begins with a key signature of one sharp (F#) and a common time signature (C). The first measure contains a series of eighth and sixteenth notes, with some notes beamed together. The second measure continues the rhythmic pattern, ending with a double bar line. The notation is dense and complex, typical of a technical exercise or a short musical sketch.

143



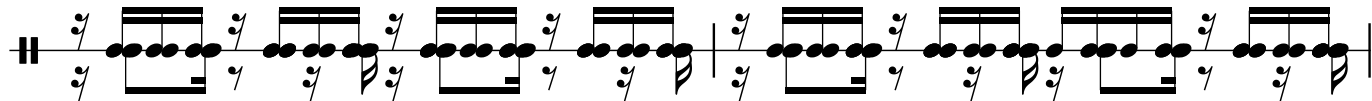
172



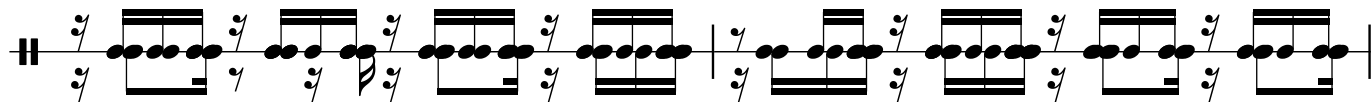
174



176



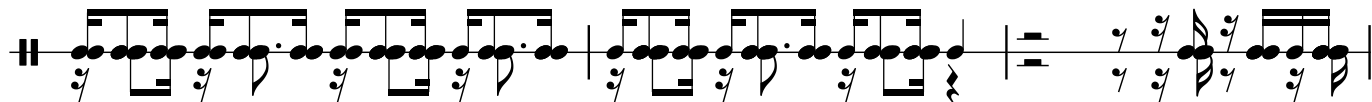
178



180



182



185



187



189

