

# Richter Belmont 1792

Composer: Michiru Yamane

Game: Akumajou Dracula X: Nocturne in the Moonlight (Japan)

[pianogame.org](http://pianogame.org)

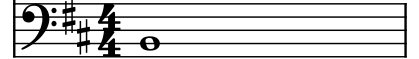
Electric Guitar, "Richter Belmont 1792"



Electric Guitar, Akumajo Dracula X - Castlevania, Nocturne in the moonlight



Violoncellos (section), For Sega Saturn



2

El. Guit.

El. Guit.

Vcs.

Musical notation for Electric Guitars and Violoncellos, measures 2-6. The Electric Guitars (El. Guit.) are in treble clef with a key signature of one sharp (F#) and a 4/4 time signature. The Violoncellos (Vcs.) are in bass clef with a key signature of one sharp (F#) and a 4/4 time signature. The notation shows a complex melodic line for the guitars and a supporting bass line for the cellos.

7

El. Guit.

El. Guit.

Vcs.

Musical notation for Electric Guitars and Violoncellos, measures 7-12. The Electric Guitars (El. Guit.) are in treble clef with a key signature of one sharp (F#) and a 4/4 time signature. The Violoncellos (Vcs.) are in bass clef with a key signature of one sharp (F#) and a 4/4 time signature. The notation shows a complex melodic line for the guitars and a supporting bass line for the cellos.

13

El. Guit.

El. Guit.

Vcs.

Musical notation for Electric Guitars and Violoncellos, measures 13-17. The Electric Guitars (El. Guit.) are in treble clef with a key signature of one sharp (F#) and a 4/4 time signature. The Violoncellos (Vcs.) are in bass clef with a key signature of one sharp (F#) and a 4/4 time signature. The notation shows a complex melodic line for the guitars and a supporting bass line for the cellos.

19

El. Guit.

El. Guit.

Vcs.

24

El. Guit.

El. Guit.

Vcs.

29

El. Guit.

El. Guit.

Vcs.