

# Use Your Head

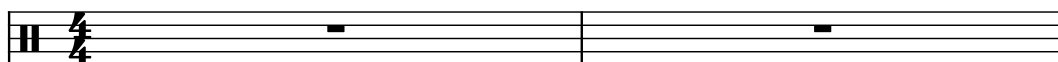
Composer: Tommy Tallarico

Game: Earthworm Jim

[pianogame.org](http://pianogame.org)

♩ = 115

Large Drum Kit, drums



Bass Guitar, bass

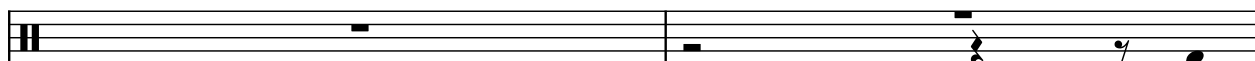


Celesta, celesta1



3

D. Kit



B. Guit.



Cel.



5

D. Kit



B. Guit.



Cel.



7

D. Kit



B. Guit.



Cel.



9

D. Kit



B. Guit.



Cel.



11

D. Kit

B. Guit.

Cel.

13

D. Kit

B. Guit.

Cel.

15

D. Kit

B. Guit.

Cel.

17

D. Kit

B. Guit.

Cel.

19

D. Kit

B. Guit.

Cel.

The image displays a musical score for three instruments: D. Kit, B. Guit., and Cel. The score is organized into five systems, each starting with a measure number (11, 13, 15, 17, 19). Each system contains three staves. The D. Kit staff is in treble clef with a key signature of one sharp (F#) and a 2/4 time signature. The B. Guit. staff is in bass clef with a key signature of one sharp (F#). The Cel. staff is in treble clef with a key signature of one sharp (F#). The D. Kit part features a complex rhythmic pattern with many eighth and sixteenth notes, often beamed together, and includes rests. The B. Guit. part consists of a steady eighth-note bass line. The Cel. part plays a continuous eighth-note melody. The notation includes various musical symbols such as notes, rests, beams, and clefs.

21

D. Kit

B. Guit.

Cel.

Measures 21-22: D. Kit plays a rhythmic pattern of eighth notes with 'x' marks above. B. Guit. plays a bass line with eighth notes and rests. Cel. plays a continuous eighth-note pattern.

23

D. Kit

B. Guit.

Cel.

Measures 23-24: D. Kit continues the rhythmic pattern. B. Guit. continues the bass line. Cel. continues the eighth-note pattern.

25

D. Kit

B. Guit.

Cel.

Measures 25-26: D. Kit plays a new rhythmic pattern. B. Guit. is silent. Cel. continues the eighth-note pattern.

27

D. Kit

B. Guit.

Cel.

Measures 27-28: D. Kit continues the new rhythmic pattern. B. Guit. is silent. Cel. continues the eighth-note pattern.

29

D. Kit

B. Guit.

Cel.

Measures 29-30: D. Kit continues the new rhythmic pattern. B. Guit. is silent. Cel. continues the eighth-note pattern.