

# **The King Of Speed (General MIDI)**

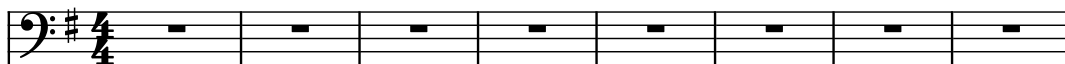
Composer: Takenobu Mitsuyoshi

Game: Daytona USA

[pianogame.org](http://pianogame.org)

♩ = 136

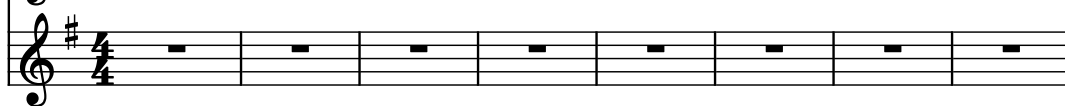
Bass Synthesizer, Bass



Vibraphone, Glocken



Brass, Brass



9

Synth.



17

Synth.

Vib.

Br.

19

Synth.

Vib.

Br.

21

Synth.

Vib.

Br.

23

Synth.

Vib.

Br.

25

Synth.   
Vib.   
Br. 

30

Synth.   
Vib.   
Br. 


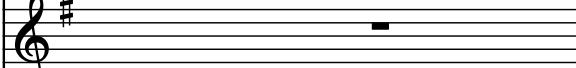

32

Synth.   
Vib.   
Br. 

34

Synth.   
Vib.   
Br. 

36

Synth.   
Vib.   
Br. 

38

Synth.

Vib.

Br.

40

Synth.

Vib.

Br.

42

Synth.

Vib.

Br.

44

Synth.

Vib.

Br.

46

Synth.

Vib.

Br.

48

Synth. 

Vib. 

Br. 


50

Synth. 


Vib. 

Br. 

52

Synth. 

Vib. 

Br. 

54

Synth. 

Vib. 

Br. 


56

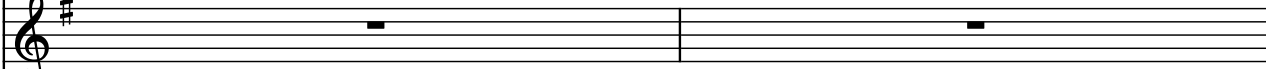
Synth. 

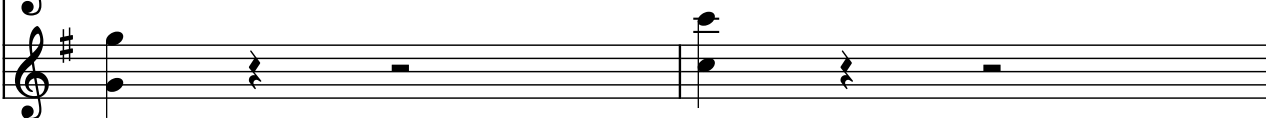
Vib. 

Br. 


58

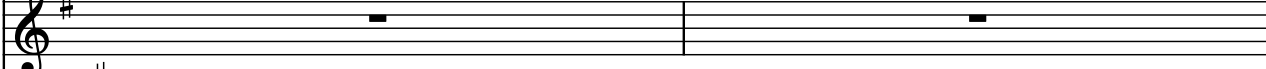
Synth. 

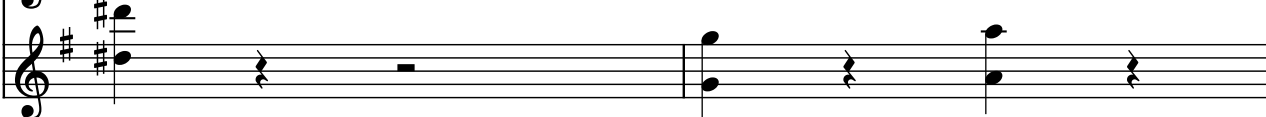
Vib. 

Br. 

60

Synth. 

Vib. 

Br. 

62

Synth. 

Vib. 

Br. 

64

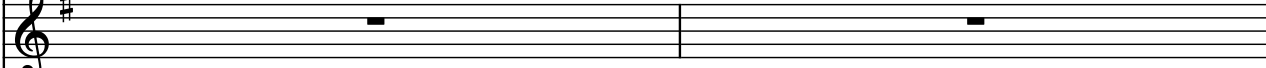
Synth. 

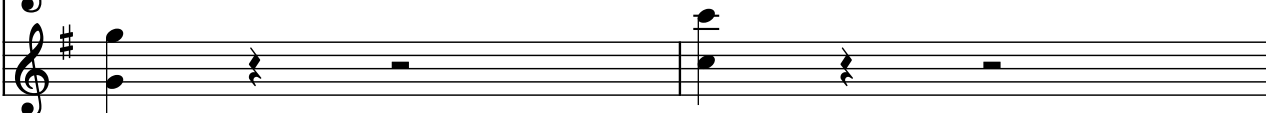
Vib. 

Br. 

66

Synth. 

Vib. 

Br. 

68

Synth.

Vib.

Br.

The image shows a musical score for three instruments: Synth., Vib., and Br. The Synth. part is in bass clef with a key signature of one sharp (F#). It features a continuous eighth-note pattern. The Vib. part is in treble clef with a key signature of one sharp (F#) and contains whole rests for both measures. The Br. part is in treble clef with a key signature of one sharp (F#) and contains a half note chord (F# and C#) in measure 68, followed by whole rests, and a half note chord (F# and C#) in measure 69, followed by whole rests.