

Galatic Commander Battle

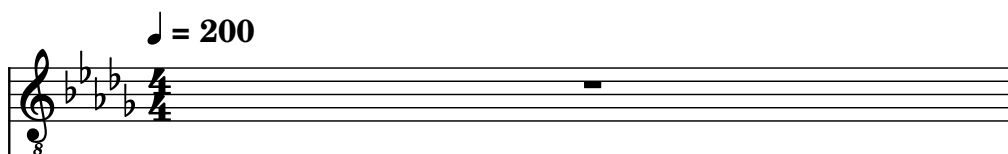
Composer: Junichi Masuda

Game: Pokémon (Diamond, Pearl)

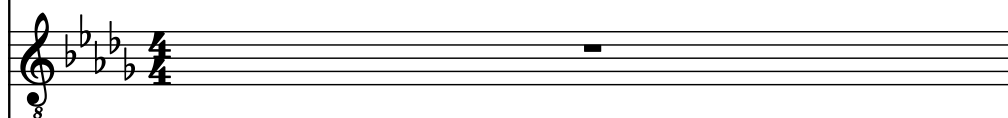
pianogame.org

♩ = 200

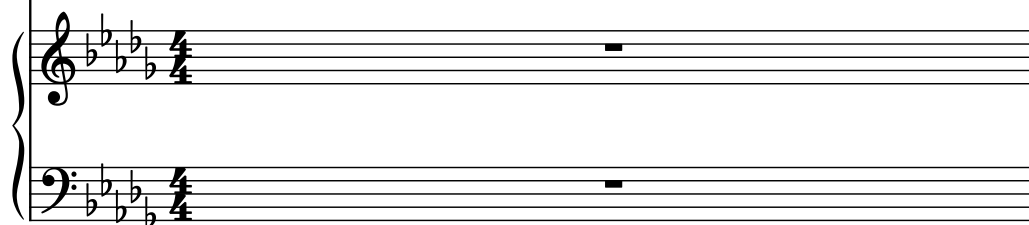
Electric Guitar, Trumpet



Electric Guitar, Trombone



Mallet Synthesizer, Flute



2

El. Guit.

El. Guit.

Mal. Syn.

Detailed description: This system contains measures 3 and 4 of the piece. It features three staves. The first two staves are for Electric Guitar (El. Guit.) in treble clef, key of B-flat major (two flats), and 4/4 time. The third staff is for Mallet Synthesizer (Mal. Syn.) in grand staff (treble and bass clefs), key of B-flat major (two flats), and 4/4 time. Measure 3 begins with a measure rest (z) on the first El. Guit. staff. The second El. Guit. staff and the Mal. Syn. staff all contain eighth-note patterns. Measure 4 continues these patterns. The Mal. Syn. bass staff contains whole rests for both measures.

3

El. Guit.

El. Guit.

Mal. Syn.

Detailed description: This system contains measures 5 and 6 of the piece. It features three staves. The first two staves are for Electric Guitar (El. Guit.) in treble clef, key of B-flat major (two flats), and 4/4 time. The third staff is for Mallet Synthesizer (Mal. Syn.) in grand staff (treble and bass clefs), key of B-flat major (two flats), and 4/4 time. Measure 5 continues the eighth-note patterns from the previous system. Measure 6 shows a change: the first El. Guit. staff has a whole rest, the second El. Guit. staff has a whole rest, and the Mal. Syn. staff has a half note in the treble and a half note in the bass. The Mal. Syn. bass staff has a whole rest for the first half of measure 6.

6

El. Guit.

El. Guit.

Mal. Syn.

Measures 6-10: The electric guitar parts are mostly rests. The maracas synthesizer part has notes in measures 6, 7, 9, and 10.

11

El. Guit.

El. Guit.

Mal. Syn.

Measures 11-15: The maracas synthesizer part plays a melodic sequence starting in measure 11, continuing through measures 12, 13, 14, and 15.

16

El. Guit.

El. Guit.

Mal. Syn.

Measures 16-20: The maracas synthesizer part plays a complex rhythmic pattern starting in measure 16, continuing through measures 17, 18, 19, and 20.

20

El. Guit.

El. Guit.

Mal. Syn.

24

El. Guit.

El. Guit.

Mal. Syn.

28

El. Guit.

El. Guit.

Mal. Syn.

32

El. Guit.

El. Guit.

Mal. Syn.

8

35

El. Guit.

El. Guit.

Mal. Syn.

8

39

El. Guit.

El. Guit.

Mal. Syn.

8

43

El. Guit.

El. Guit.

Mal. Syn.

Measures 43-46. The first electric guitar part has a melodic line in measure 43 and rests in 44-46. The second electric guitar part has a continuous eighth-note pattern. The maracas part has a steady eighth-note accompaniment.

47

El. Guit.

El. Guit.

Mal. Syn.

Measures 47-51. The first electric guitar part has rests in measures 47-51. The second electric guitar part has a pattern of eighth notes and eighth rests. The maracas part continues with eighth notes and eighth rests.

52

El. Guit.

El. Guit.

Mal. Syn.

Measures 52-55. The first electric guitar part has whole notes with natural harmonics. The second electric guitar part has a melodic line with a slur. The maracas part has rests in measures 52-55.

56

El. Guit.

El. Guit.

Mal. Syn.

59

El. Guit.

El. Guit.

Mal. Syn.

65

El. Guit.

El. Guit.

Mal. Syn.

69

El. Guit.

El. Guit.

Mal. Syn.

73

El. Guit.

El. Guit.

Mal. Syn.

77

El. Guit.

El. Guit.

Mal. Syn.

80

El. Guit.

El. Guit.

Mal. Syn.

83

El. Guit.

El. Guit.

Mal. Syn.

87

El. Guit.

El. Guit.

Mal. Syn.

91

El. Guit.

El. Guit.

Mal. Syn.

95

El. Guit.

El. Guit.

Mal. Syn.

100

El. Guit.

El. Guit.

Mal. Syn.

104

El. Guit.

El. Guit.

Mal. Syn.

This musical system covers measures 104 to 106. The first two staves are for Electric Guitar (El. Guit.) in treble clef, and the third is for Mal. Syn. in bass clef. The key signature has four flats (B-flat, E-flat, A-flat, D-flat). Measure 104 features a melodic line in the first guitar staff with eighth notes and a half note, while the second guitar staff plays a steady eighth-note accompaniment. Measure 105 shows a change in the first guitar staff with a dotted half note and a quarter note, and a more complex accompaniment in the second guitar staff. Measure 106 continues the melodic and accompaniment patterns. The Mal. Syn. part consists of three measures with whole rests.

107

El. Guit.

El. Guit.

Mal. Syn.

This musical system covers measures 107 to 109. The first two staves are for Electric Guitar (El. Guit.) in treble clef, and the third is for Mal. Syn. in bass clef. The key signature remains four flats. Measure 107 features a melodic line in the first guitar staff with a dotted half note and a quarter note, and a steady eighth-note accompaniment in the second guitar staff. Measure 108 shows a change in the first guitar staff with a dotted half note and a quarter note, and a more complex accompaniment in the second guitar staff. Measure 109 continues the melodic and accompaniment patterns. The Mal. Syn. part consists of three measures with whole rests.